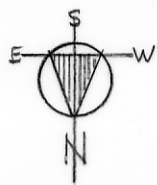
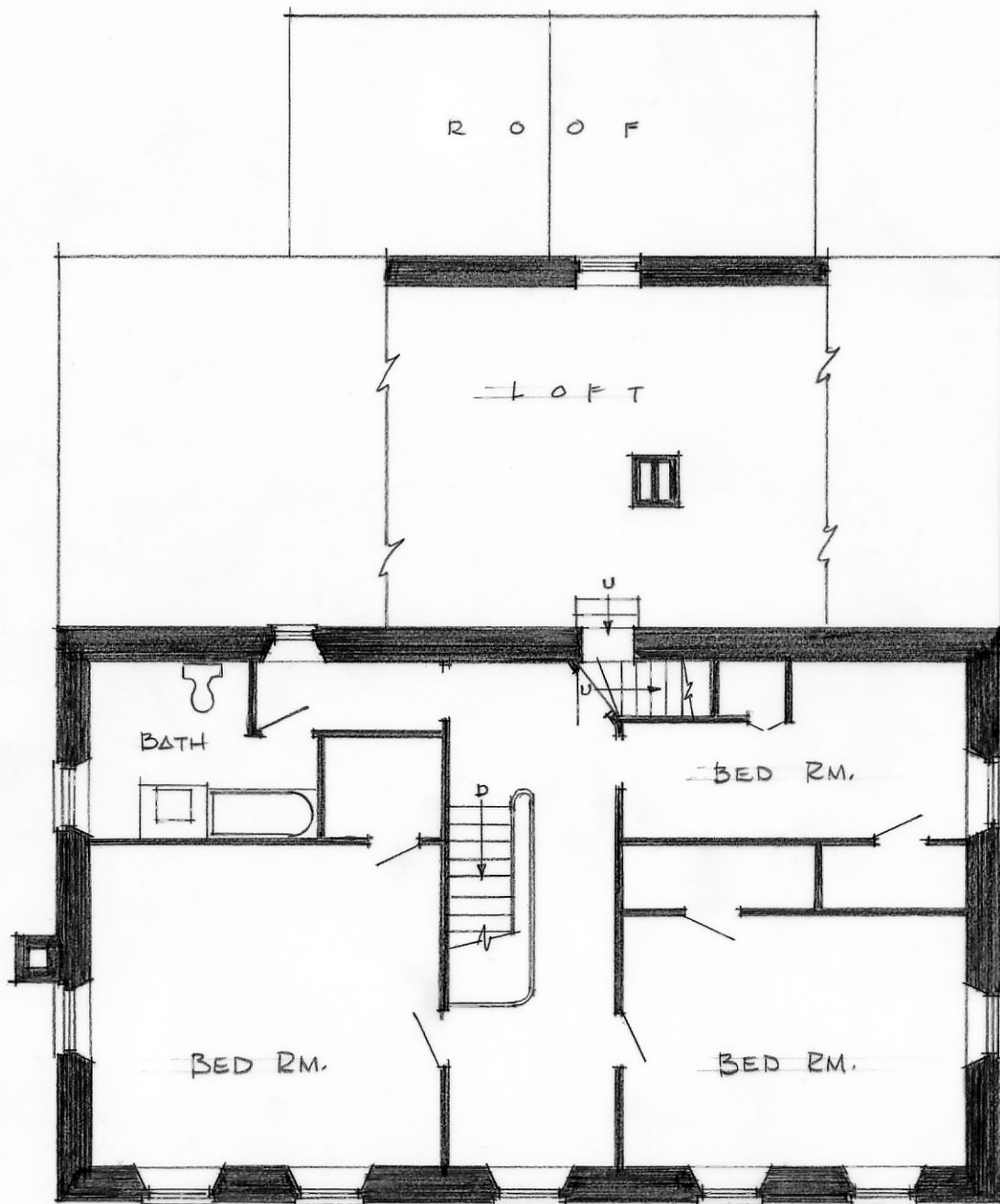


FIRST FLOOR PLAN 1/8" = 1'

Existing Conditions, measured 1987

The Resource Center
The Cobblestone Society
Albion, New York

Whipple House
13076 Ridge Road, Town of Gaines
Orleans County, New York



SECOND FLOOR PLAN 1/8" = 1'

Existing Conditions, measured 1987

The Resource Center
The Cobblestone Society
Albion, New York

Whipple House
13076 Ridge Road, Town of Gaines
Orleans County, New York